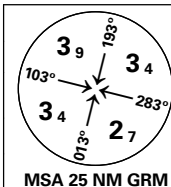
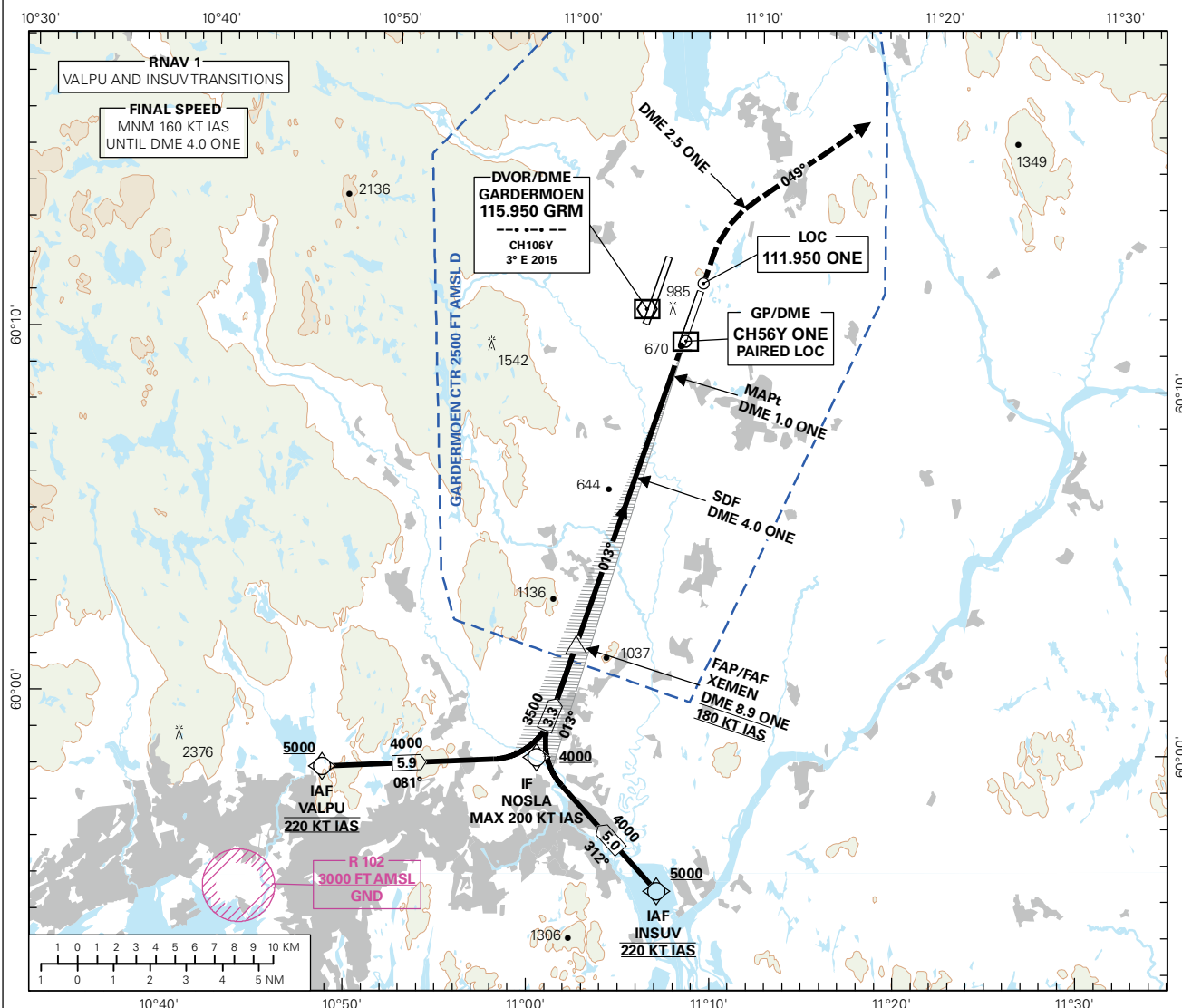


INSTRUMENT APPROACH CHART - ICAO PLAN VIEW SCALE: 1:350 000

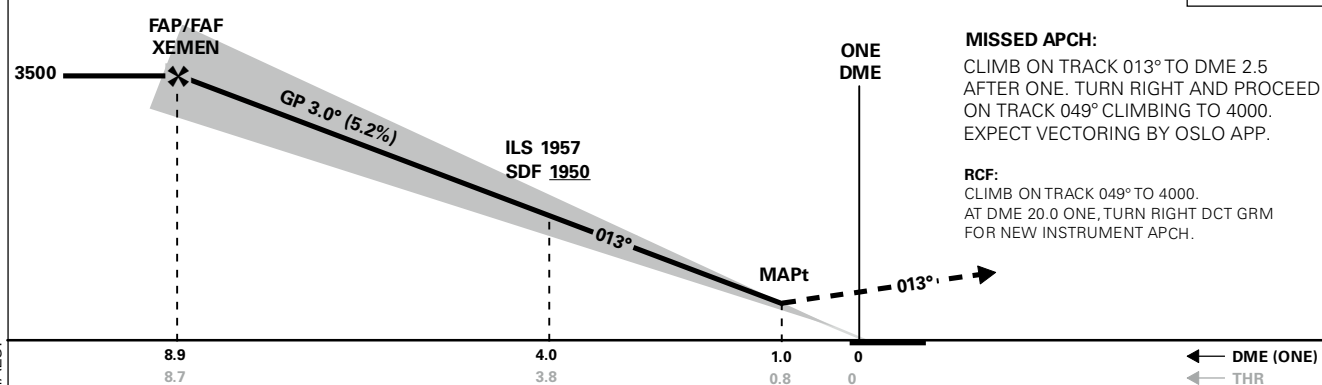
OSLO

GARDERMOEN
ILS or LOC RWY 01RTRANSITION ALTITUDE
7000

ATIS: 126.125	AD ELEV: 681	
APP: 118.475 120.450	THR ELEV: 670	DIST IN NM
DIR: 136.400 (119.975)	HGT RELATED TO THR RWY 01R	ELEV, ALT AND HGT IN FT
FIN: 128.900	CIRCLING HGT RELATED TO AD ELEV	
TWR: 120.100 (123.325)	BEARINGS ARE MAGNETIC - VAR 2.8° E (2015)	
GND: 121.900		



DIST TO ONE	9	8	7	6	5	4	3	2
ALT (HGT)	-	3220 (2550)	2900 (2230)	2590 (1920)	2270 (1600)	1950 (1280)	1630 (960)	1310 (640)
								ILS RDH 50



CAT OF ACFT	A	B	C	D	FINAL APCH	DIST FAF - MAPt: 7.9
OCA(H)	CAT I	849 (179)	861 (191)	869 (199)	880 (210)	
STRAIGHT - IN	CAT II	720 (50)	730 (60)	742 (72)	754 (84)	
	LOC	970 (300)				
CIRCLING		1280 (599)	1570 (889)	1630 (949)		

NOTE: CAT IIIB APPROVED. CIRCLING E OF RWY ONLY.

CHANGES: EDITORIALS

Avinor

03 MAR 2016